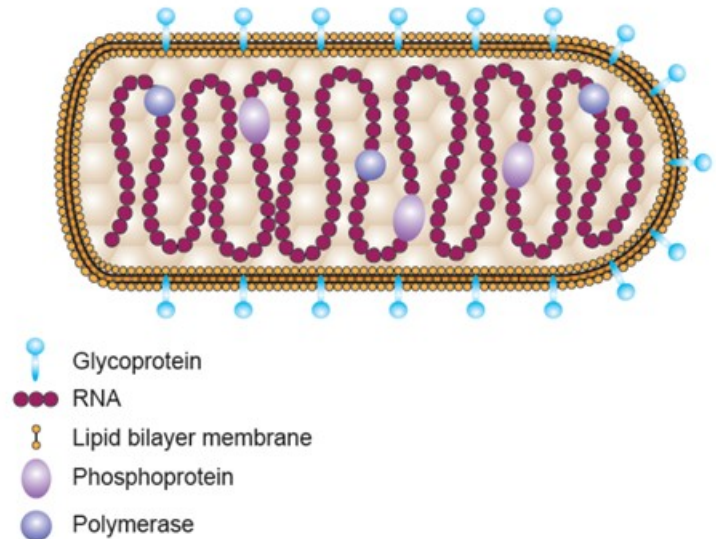


Rabies vaccines - Session 8

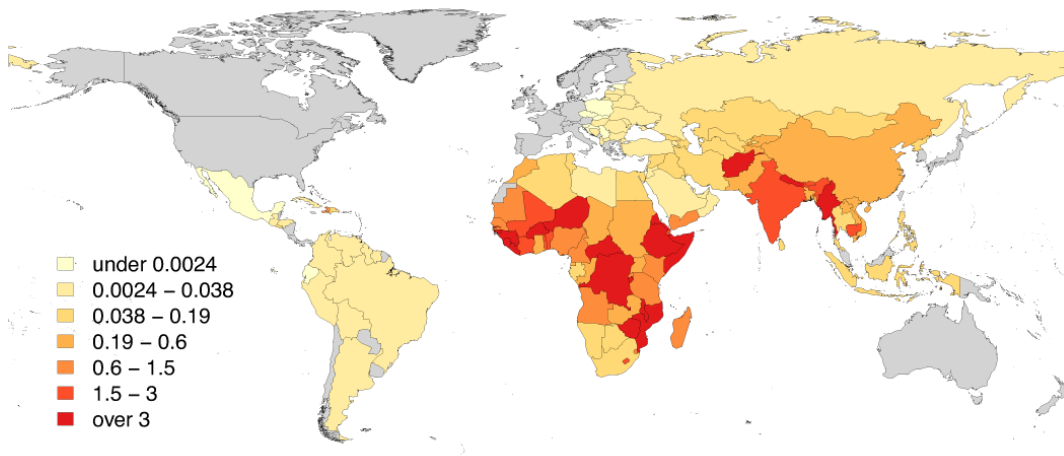
Session outline

- Introduction to rabies
- Pre-exposure prophylaxis (PrEP)
- Post-exposure prophylaxis (PEP)
- Rabies immunoglobulins (RIG)



Rabies is a neglected, vaccine-preventable disease

An indicator for impact on inequity



Rabies per capita death rates per 100,000 persons.

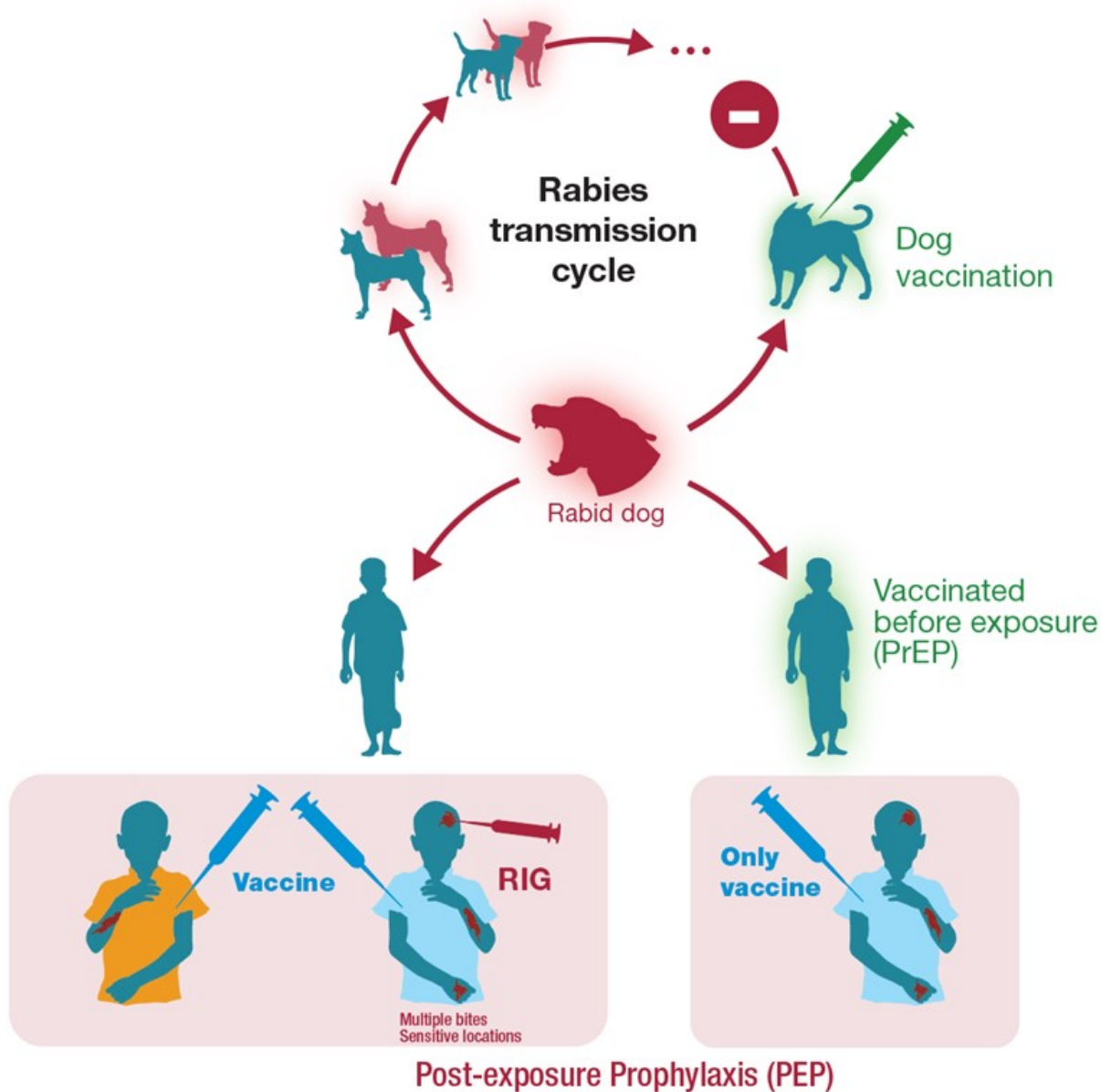
- 100% fatal
- ~60,000 deaths per year
- Weak data and under-reporting
- Mostly children
- Dog bites cause ~ 95-99% of human cases
- Vaccine is a key component of the global plan and triggers national programmes

Our Goal:
Zero by 30

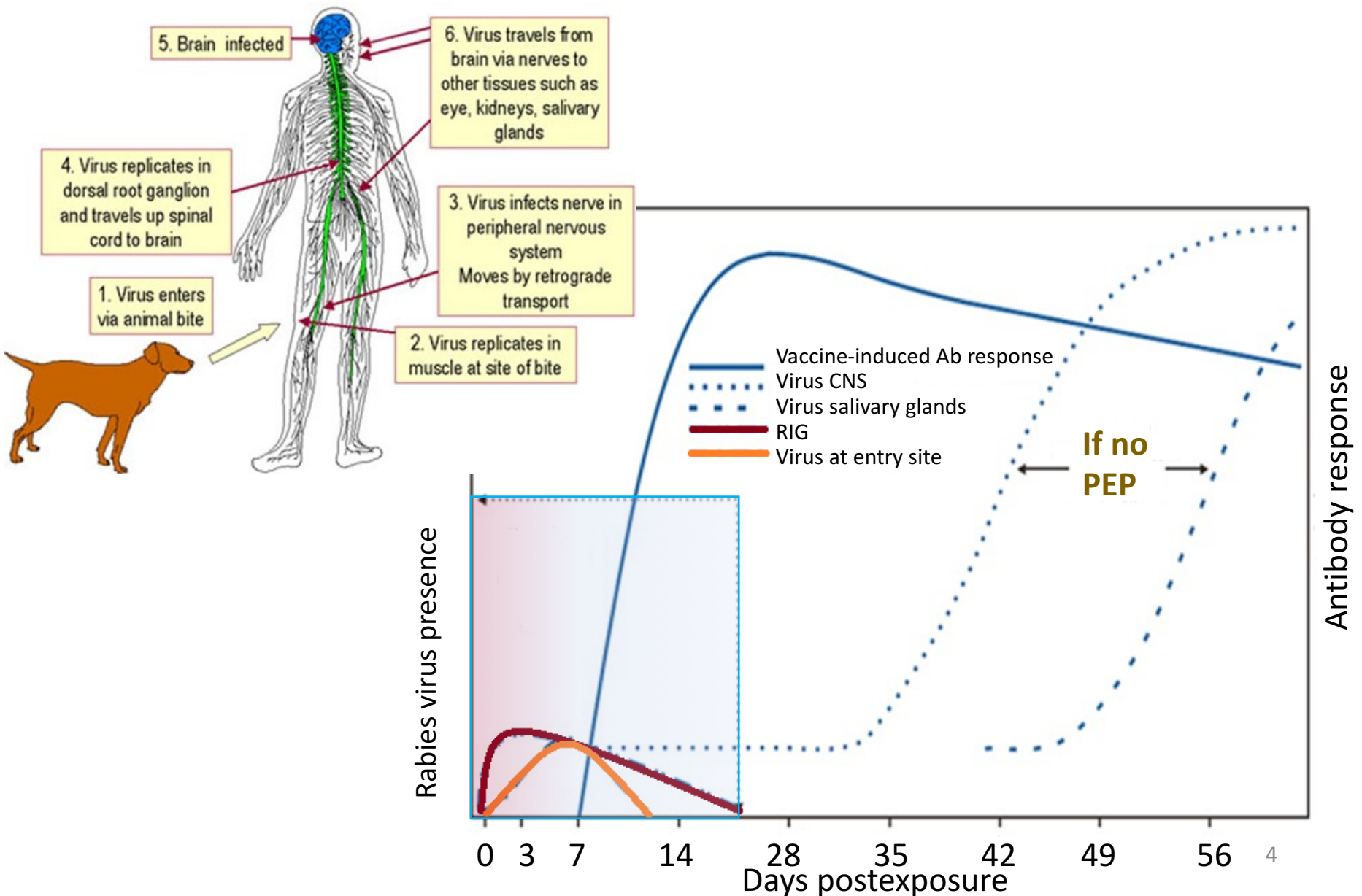
3 GOOD HEALTH
AND WELL-BEING



Rabies transmission cycle and preventive measures



Rabies virus pathogenesis



Rabies vaccines & immunoglobulins

Vaccines

Product

- Highly immunogenic & well tolerated
- Same vaccines for PrEP and PEP
- Rabies virus-neutralizing antibodies: 0.5 IU/ml considered protective
- Currently, 3 WHO PQ rabies vaccines more under review

Use

- Administration ID or IM equivalent
- Demand driven delivery
- Global manufacturing capacity if needs forecasted would be sufficient

RIG

Product

- HRIG & eRIG ,
- Monoclonal antibodies (new)
- No WHO quality assessment process
 - Batch-to-batch variation ↑
 - Rel. short shelf-life

Use

- 1% of Cat III bite victims in endemic countries receive RIG
- Barriers:
 - Global availability & supply ↓↓
 - Hesitance to administer RIG
 - Out of pocket expenses

Update the rabies position paper

- Compelling **new scientific evidence**
- Simplify recommendations and increase attention to improve **programmatic delivery and clinical feasibility** in different settings while maintaining safety and efficacy
- Create opportunities for **better access and maximize public health impact of biologics**
- A break through may lie ahead if the **Gavi Vaccine Investment Strategy 2018** includes rabies
- A **global strategy** for human rabies elimination by 2030 provides a comprehensive approach

United against Rabies to Reach Zero Rabies deaths by 2030

PREVENT

Awareness, responsible dog ownership, bite prevention and dog vaccination

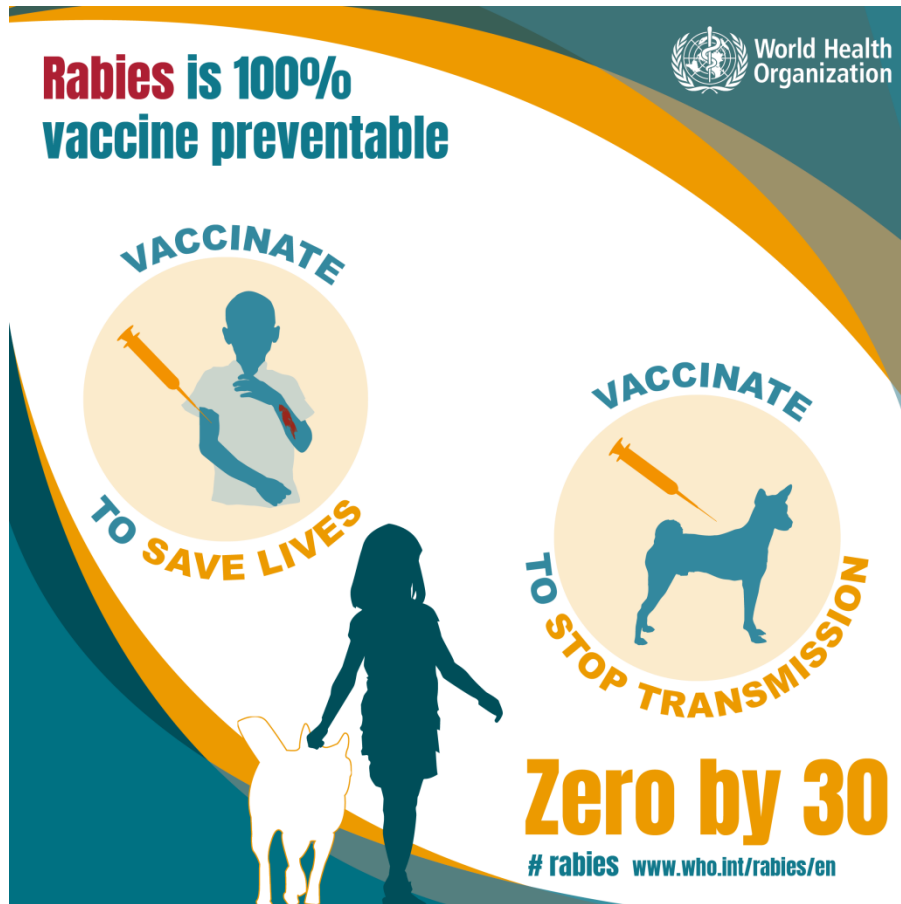


RESPOND

Bite management and when necessary, post-exposure treatment, Integrated bite case management



Thank you!



SAGE members

Kate O'Brien

Terry Nolan

Experts

Ahmed Be-Nazir

Lucille Blumberg

Deborah Briggs

Mathurin Cyrille Tejiokem

Luzia Queiroz

Naseem Salahuddin

Gade Sampath

Arnaud Tarantola

Mary Warrell

Henry Wilde

WHO secretariat