

Epidemiological situation update

(data as of 02 April)

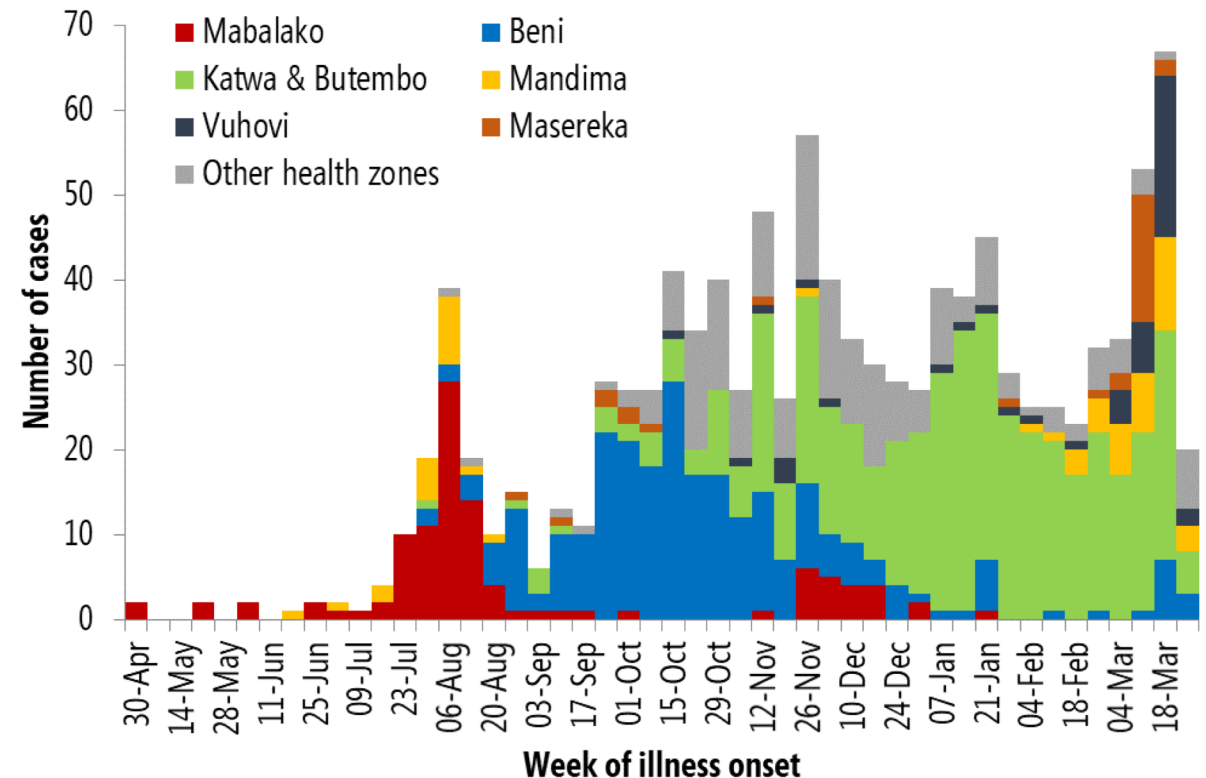
Highlights:

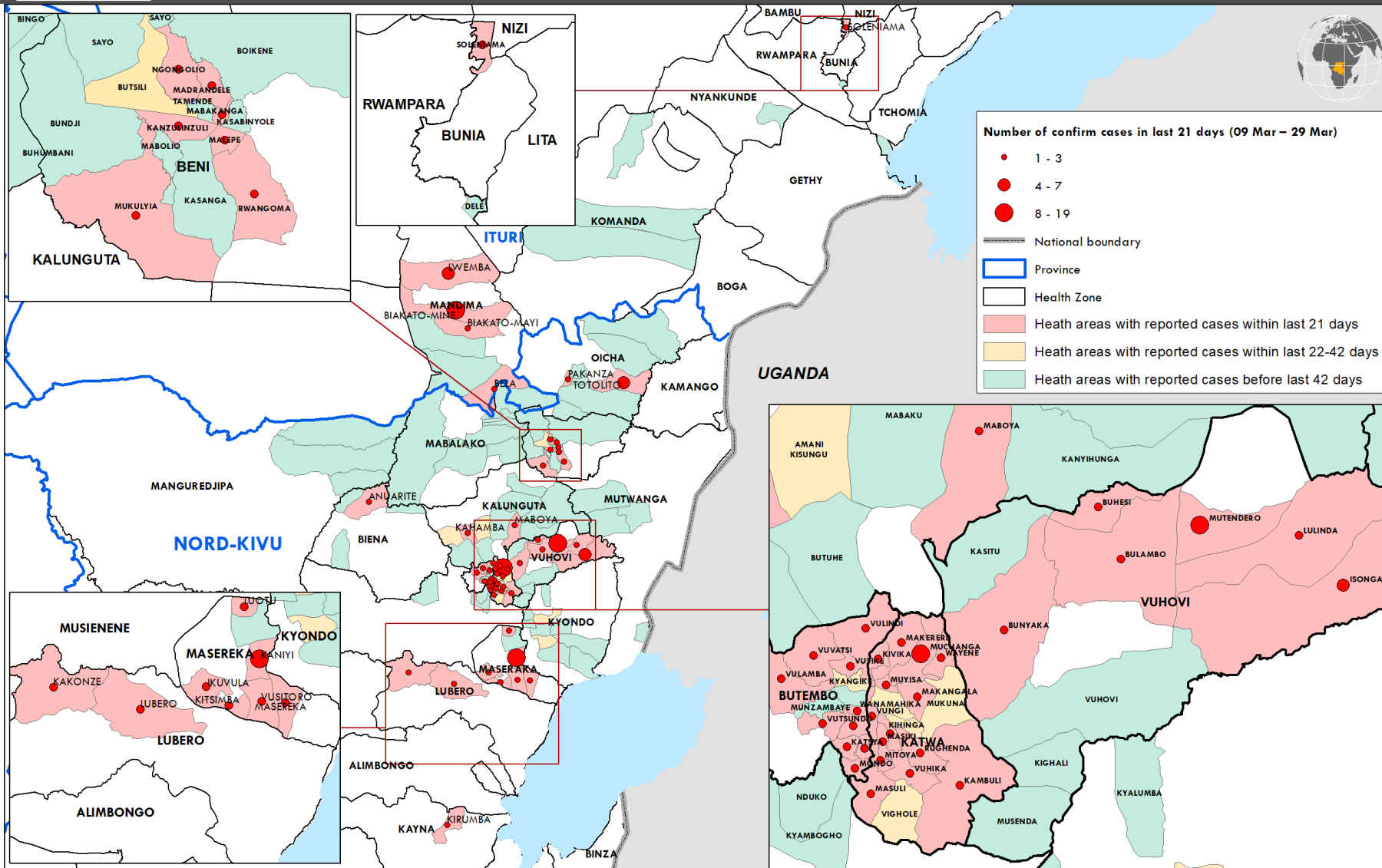
- **Successful geographical containment and control in many areas**
 - Current transmission in 57/135 health areas within 12/21 health zones
- Recent activity concentrated in **metropolitan hotspots** (Katwa & Butembo) with smaller clusters emerging elsewhere (e.g. Mandima, Masereka, Vuhovi)), linked back to hotspots
- Recent **increase in incidence of new cases**
- **Persistent challenges:** delays in case isolation, contact enumeration, movement of cases and contacts, pockets of community mistrust, insecurity, barriers to probable case reporting
- **High risks remain at national and regional levels**

Cumulative to date:

- **1100 cases:** 1034 confirmed, 66 probable
- **690 deaths** (CFR 63%)
- **338 survivors** discharged from ETCs
- 81 (7%) **healthcare work infections**

EVD cases by week of illness onset by health





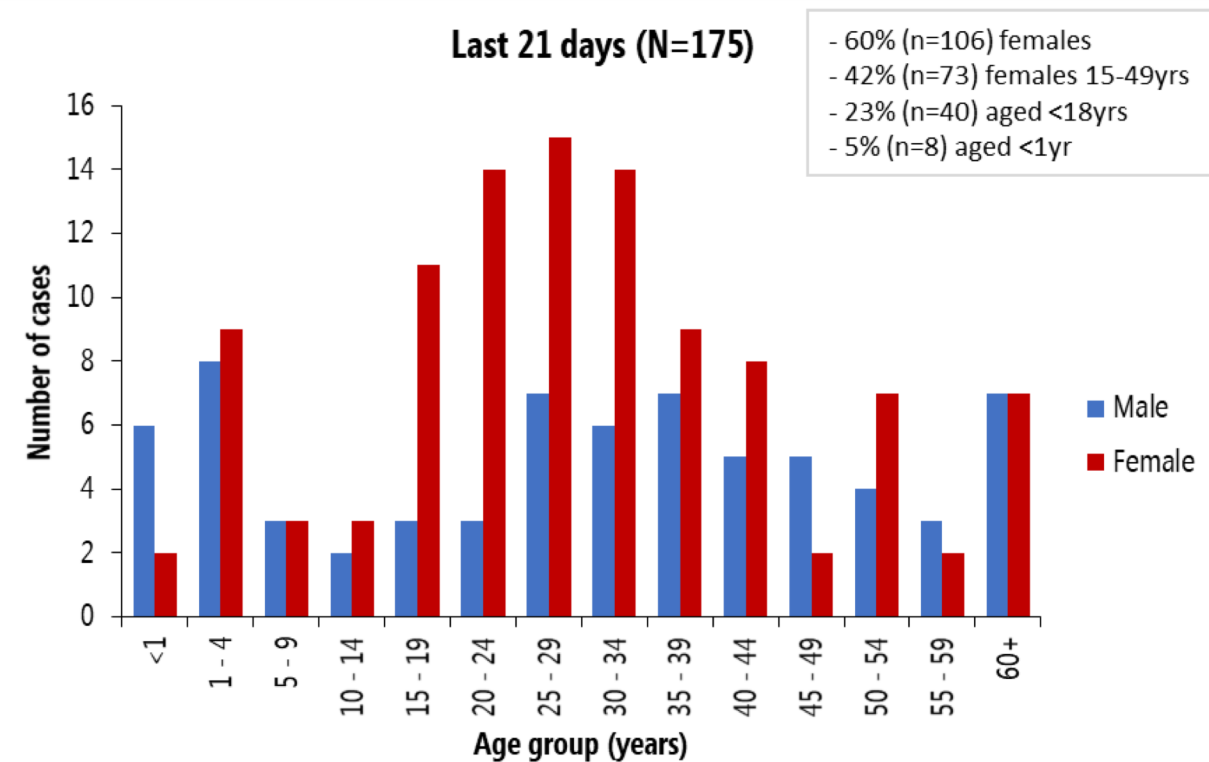
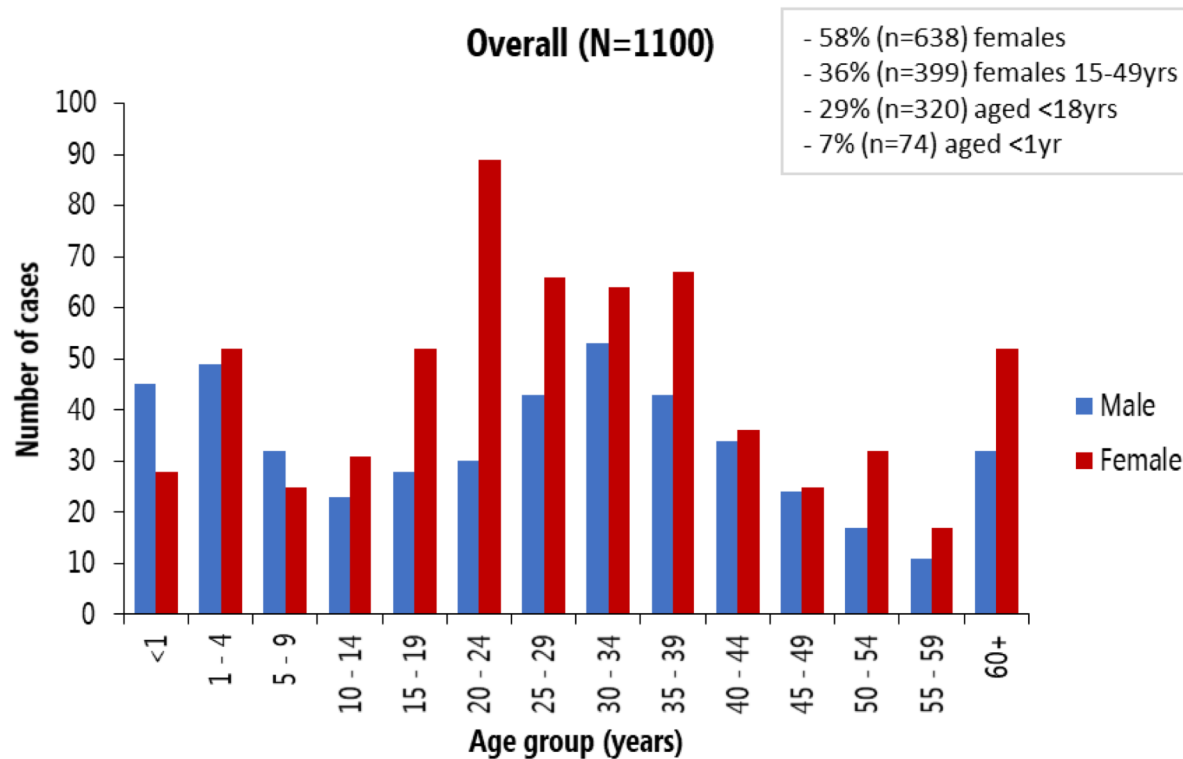
- 172 cases reported in the last 21 days (13 Mar - 2 Apr):

- 50 (39%) Katwa
- 34 (27%) Vuhovi
- 28 (22%) Mandima
- 18 (14%) Masereka
- 13 (10%) Beni
- 12 (9%) Butembo
- 17 (10%) from other 6 zones

- 3 health areas make up the majority of cases within hotspot areas:

- Muchanga in Katwa,
- Mutendero in Vuhovi
- Biakato Mine in Mandima

Age-sex distribution (data as of 02 April)



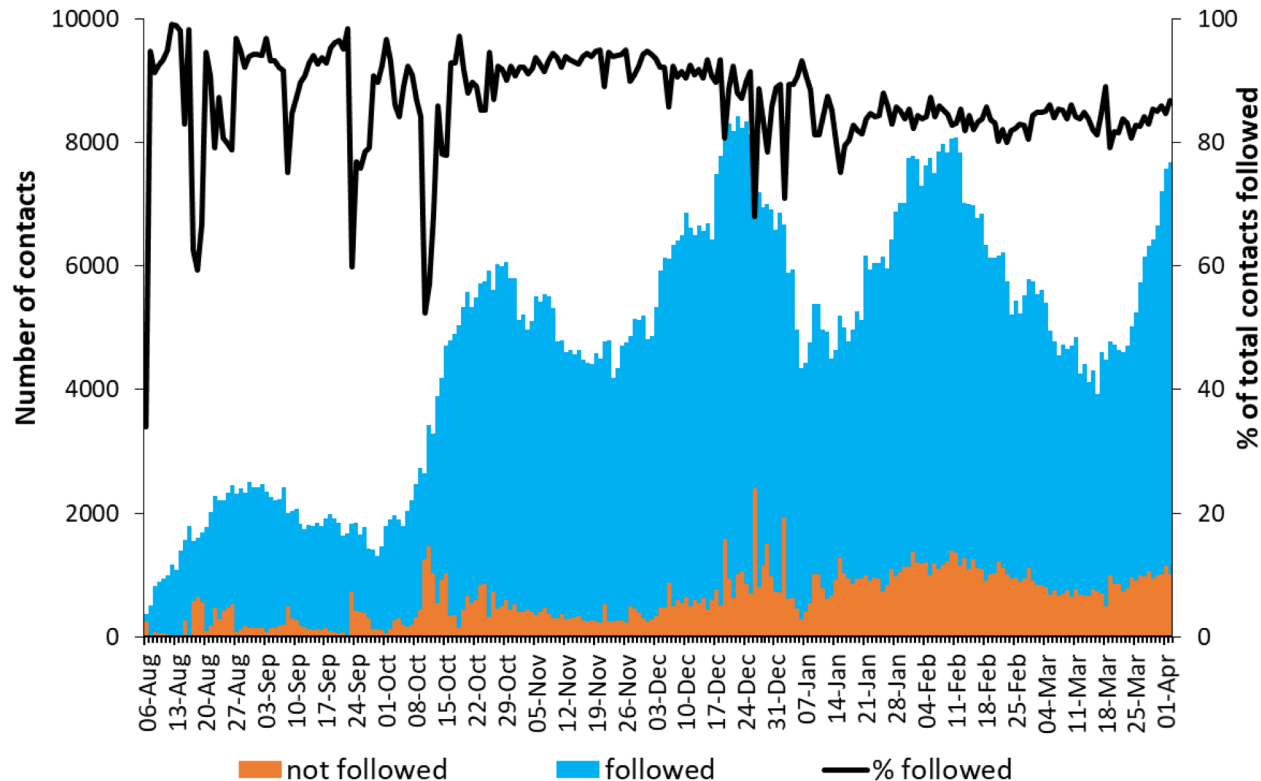
- Since 1 Jan 2019, 43% (15/35) of cases among infants aged <1yr suspected as mother-to-child transmission

**All data are preliminary and subject to change with further data capture and cleaning.*

Contact tracing

(data as of 02 April)

Trends in the number of contacts currently under surveillance and proportion followed



- >65 800 contacts registered to date
- 7674 remain under surveillance across 15 health zones
- 83-87% of contacts followed during the last 7 days
- Persistent challenges:
 - Investigation and listing of all exposed contacts in HCFs and among reluctant families or communities
 - Fear or avoidance of response teams, or relocation to other areas at illness onset

Health operations overview (1)

(data as of 02 April)

9 April 2019



Clinical Management

- 5 ETCs in Beni, Butembo, Goma, Komanda and Mangina
- 6 TCs in Beni, Bunia, Katwa, Kayna, Bwanasura and Oicha
- High occupancy rate in Butembo ETC and Katwa TC – reopening of CTE Katwa with support from ALIMA should decompress this
- 413 patients treated under MEURI (compassionate)
- 100 patients enrolled in RCT



Laboratories

- 7 labs operational in Beni, Bunia, Butembo, Katwa, Komanda, Goma, Mangina.
- 1778 samples tested last week; 11% positive
- >26 800 samples tested to date
- Ongoing full genome sequencing in Katwa and Kinshasa INRB laboratories.



Safe and Dignified Burials

- >3300 SDB alerts received
- 27 Red Cross teams and 28 Civil Protection teams trained and operational
- 11 operational community emergency harm reduction burial teams (CEHRBU)
- High success rates: 86% in Katwa and 90% in Butembo for weeks 9-11

Health operations overview (2)

(data as of 02 April)

9 April 2019



Risk Communication and Community Engagement

- Macro-level: Revised RCCE strategy with partners & NGOs, clearer mapping capacities & activities, inclusion of non-health partners
- Grassroots-level: establishment and enhanced engagement of community committees & dialogues, house-to-house visits, discussions at places of congregation
- Tracking & follow-up until resolution of all instances of reluctance/resistance against response activities
- Yielding tangible results on the ground



Surveillance at Points of Entry / Points of Control

- No travel/trace restrictions or changes in flight patterns
- As of 31 March:
 - >46 million screenings
 - 587 alerts
 - 258 suspected cases
 - 7 confirmed cases
- Other direct benefits



Survivor program

- Monthly clinical, biological and psychological follow-ups and counselling
 - Most survivors enrolled; 252 survivors screened 24-31 March
 - Early findings suggest moderate-high semen positivity up 150 days post-onset, declining thereafter; lower detection rates in vaginal/breastmilk samples
 - Lower rates of observed rates of complications (e.g. uveitis) vs. West Africa
- ongoing investigation



World Health Organization



HEALTH
EMERGENCIES
programme