



# 2. What have we learned in Chad and in Malawi?

*(R. Mihigo)*  
*[Results of two country MOV assessments in Africa]*

# National immunization schedules

## Chad

### Immunization Schedule (2014 or latest available)

Vaccine	Schedule
BCG	birth;
DTwPHibHepB	6, 10, 14 weeks;
IPV	14 weeks;
Measles	9 months;
OPV	Birth; 6, 10, 14 weeks;
TT	1st contact; +1, +6 months; +1, +1 year;
YF	9 months;

## Malawi

### Immunization Schedule (2014 or latest available)

Vaccine	Schedule
BCG	birth;
DTwPHibHepB	6, 10, 14 weeks;
HPV	1st contact; +2, +4 months;
Measles	9 months;
OPV	6, 10, 14 weeks;
Pneumo_conj	6, 10, 14 weeks;
Rotavirus	6, 10 weeks;
TT	1st contact; +1, +6 months; +1, +1 year;
VitaminA	6, 12, 18, 24, 30, 36 months;



# What did it take to conduct the MOV assessments in Chad and Malawi?

## CHAD

**2** days of field work

**15** teams of 2 people

**6** districts assessed

**30** health facilities



**377** Exit interviews of parents/guardians

**179** Health care workers interviewed

**4** Focus group sessions with parents/guardians

**4** Focus group sessions health care workers

## MALAWI

**3** days of field work

**10** teams of 2 people

**10** districts assessed

**30** health facilities



**599** Exit interviews of parents/guardians

**262** Health care workers interviewed

**6** Focus group sessions with parents/guardians

**6** Focus group sessions health care workers

# Field staff documenting missed opportunities during interviews with parents/guardians at the exit of health facilities



# Vaccination card availability on the day of the exit interview

	Chad	Malawi
<i>Number responding to this question</i>	339	556
Yes, and I have it with me today	62%	93%
Yes, but I do not have it with me	23%	5%
No	15%	1%

<b>If card is not with you, why not?</b>		
Forgot to bring it	17%	17%
Didn't know it was important to bring it	16%	28%
This visit was not for vaccination	33%	8%

**Note:** In Malawi, unlike in Chad, the **home-based record** is a “**health passport**” and is required for every type of health service encounter

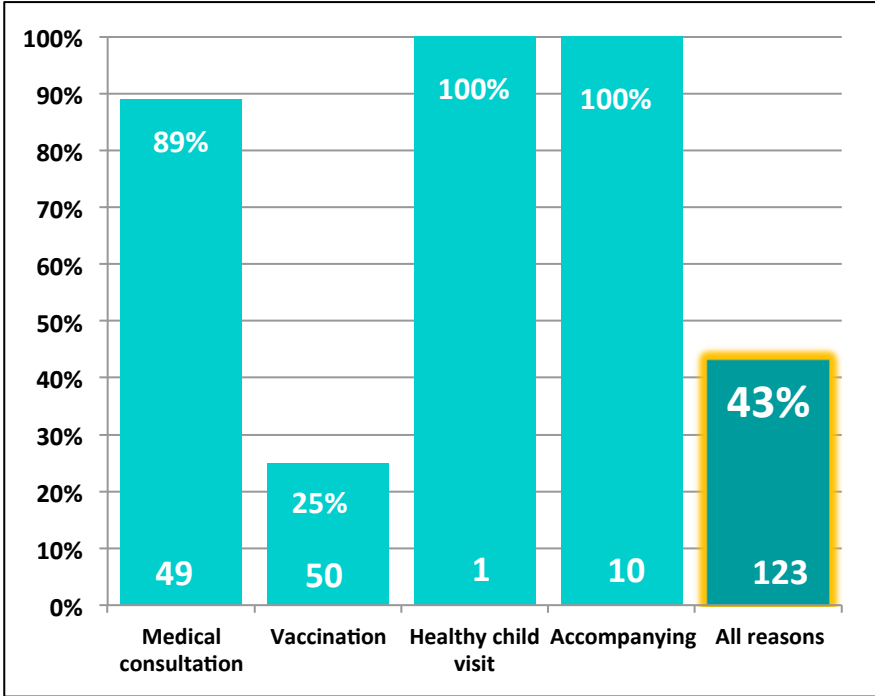


# What proportion of eligible children visiting a health facility were not vaccinated (missed opportunity)?

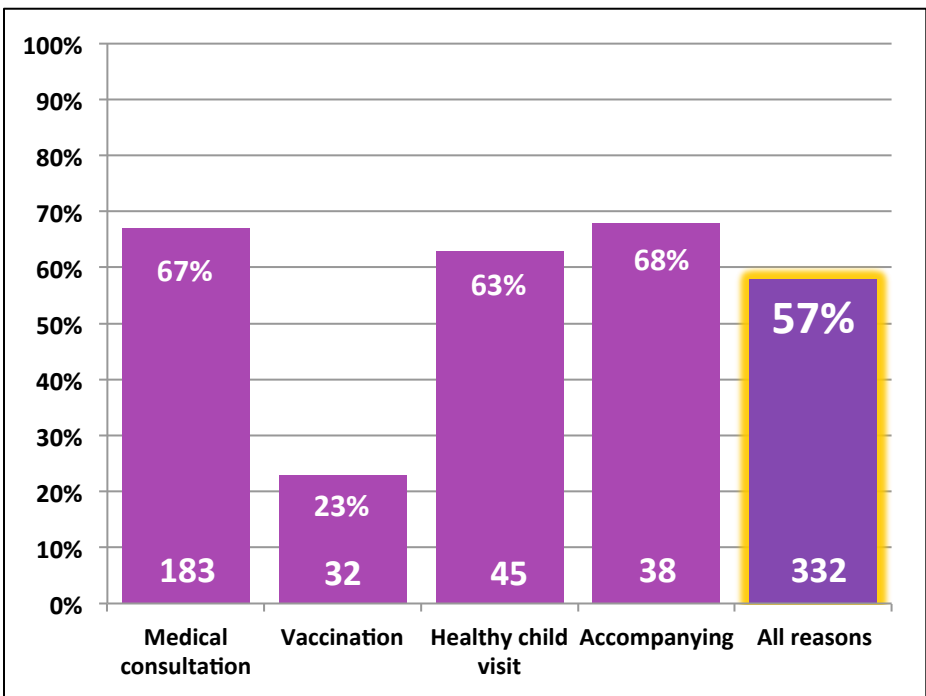
## Exit interviews of parents/caregivers

Chad: **286** with known eligibility

Proportion of missed children



Malawi: **518** with known eligibility



Reason for today's visit to the health facility

# By reason of visit, what proportion of eligible doses were given? - Chad, 2015

Integration?

Reason for visit	No. of doses eligible					No. of doses given					No. with known eligibility
	0*	1	2-6	7	n	0	1	2	3-4	n	
Medical consultation	4	1	15	35	51	53	1	1	0	2	55
Vaccination	21	27	141	11	179	71	36	86	7	129	200
Healthy child visit	0	0	0	1	1	1	0	0	0	0	1
Accompanying	0	0	3	7	10	10	0	0	0	0	10
Hospitalization	0	0	0	0	0	0	0	0	0	0	0
Other	0	2	3	2	7	7	0	0	0	0	7
Data missing	1	2	7	3	12	7	1	5	0	6	13
<b>TOTAL</b>	<b>26</b>	<b>32</b>	<b>169</b>	<b>59</b>	<b>260</b>	<b>149</b>	<b>38</b>	<b>92</b>	<b>7</b>	<b>137</b>	<b>286</b>

\*Already fully vaccinated

# By reason of visit, what proportion of eligible doses were given? - Malawi, 2015

Reason for visit	No. of doses eligible					No. of doses given					No. with known eligibility
	0*	1	2-6	7	n	0	1	2	3-4	n	
Medical consultation	87	72	57	56	185	270	0	1	1	2	272
Vaccination	31	16	89	3	108	63	14	29	33	76	139
Healthy child visit	25	16	13	17	46	70	1	0	0	1	71
Accompanying	16	11	11	18	40	54	1	1	0	2	56
Hospitalization	0	1	0	0	1	1	0	0	0	0	1
Other	8	14	6	7	27	33	1	1	0	2	35
Data missing	1	2	4	4	10	9	0	0	2	2	11
<b>TOTAL</b>	<b>168</b>	<b>132</b>	<b>180</b>	<b>105</b>	<b>417</b>	<b>500</b>	<b>17</b>	<b>32</b>	<b>36</b>	<b>85</b>	<b>585</b>

Integration?  
Health passport availability?

\*Already fully vaccinated



# So why are we missing opportunities for vaccination: Parents'/guardians' perspective – Chad and Malawi, 2015

For  
vaccination

- There were no vaccines
- Other supplies were out of stock
- Health worker did not ask about other overdue vaccines

For medical  
consultation

- Vaccination area was closed
- Vaccination was not the purpose of this visit
- Health worker did not ask about vaccination

# Today my child did NOT received any vaccine because he/she is sick

Diagnosis	Chad	Malawi
<i>Number responding that child was sick</i>	12	14
Diarrhoea	58%	0%
Cold and/or cough	33%	7%
Malnutrition/anaemia	25%	0%
Mild fever	25%	7%
<b>Pneumonia (true contra-indication)</b>	17%	7%
Dehydration	8%	7%
Child is taking medications	8%	0%
Intestinal parasites	0%	7%
Low birth weight	0%	7%
Urinary tract infection	0%	0%
Other	25%	<b>71%</b>



Can the knowledge, attitudes and practices of health care workers contribute to the occurrence of missed opportunities?



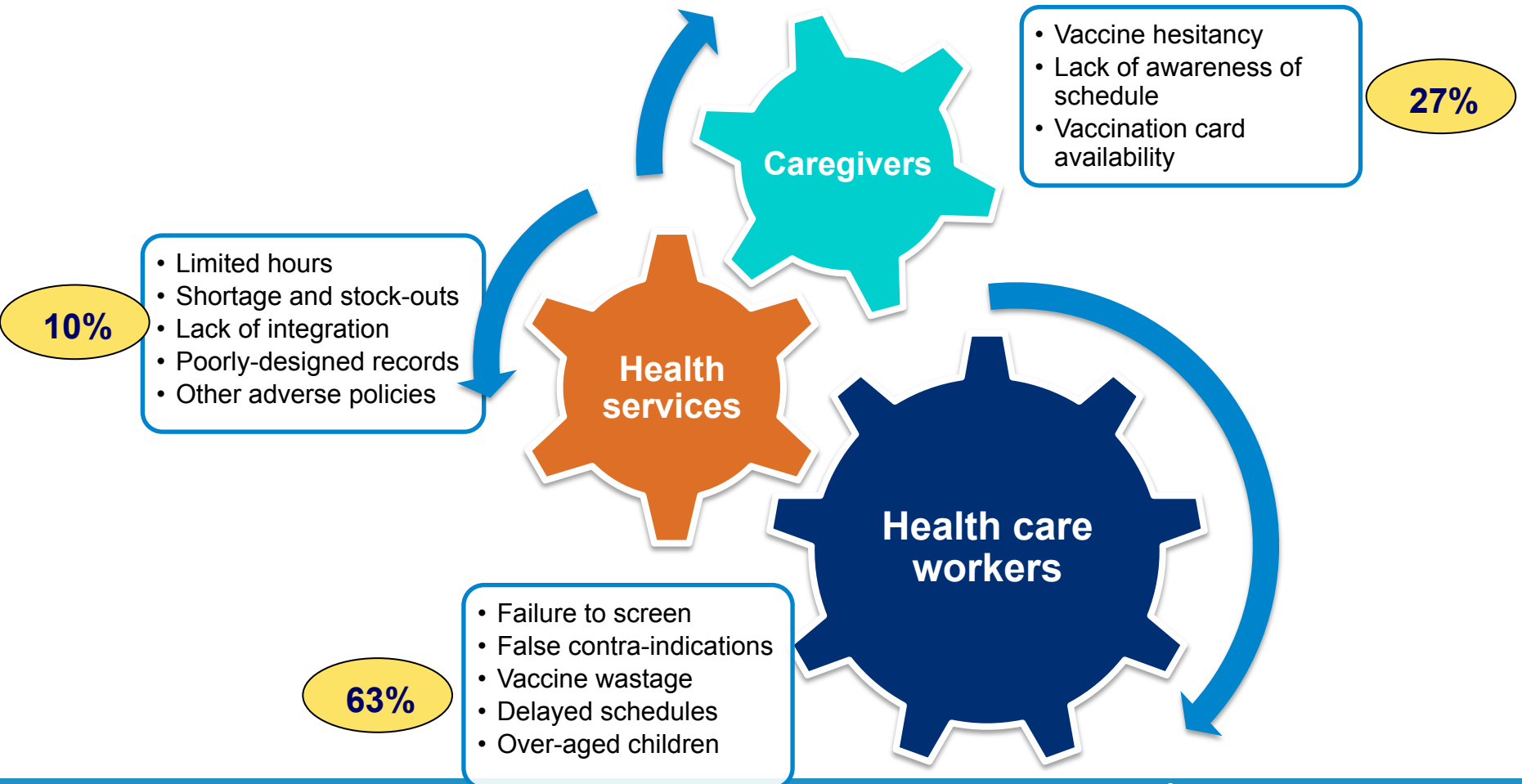
# What do the health care workers believe are contraindications to vaccination?

Perceived contraindications	Chad	Malawi
<b>For any vaccine</b>		
Local reaction to previous dose	15%	9%
Mild fever	<b>35%</b>	<b>49%</b>
Seizures under medical treatment	5%	10%
<b>Pneumonia or other serious diseases (correct response)</b>	<b>7%</b>	<b>12%</b>
None of the above	38%	20%
<b>For oral polio vaccine</b>		
Breastfeeding	9%	8%
Axillary or rectal temperature of $\leq 37.5^{\circ}\text{C}$	17%	18%
Mild malnutrition	11%	3%
Mild diarrhoea	11%	17%
<b>None of the above (this is the correct response)</b>	<b>77%</b>	<b>59%</b>

# Health care workers' views on why some children are NOT up to date on their vaccination schedule?

Responses	Chad	Malawi
Parents' negative beliefs about vaccination	53%	25%
Parents' busy lives incompatible with vaccination hours	8%	2%
Health workers do not ask parents about children's vaccination status	9%	1%
Health workers do not review vaccination cards	3%	7%
Health workers use false contra-indications	3%	2%
Distance from vaccination site	4%	14%
All of the above (this is the correct response)	19%	49%

# Summary of reasons for MOVs







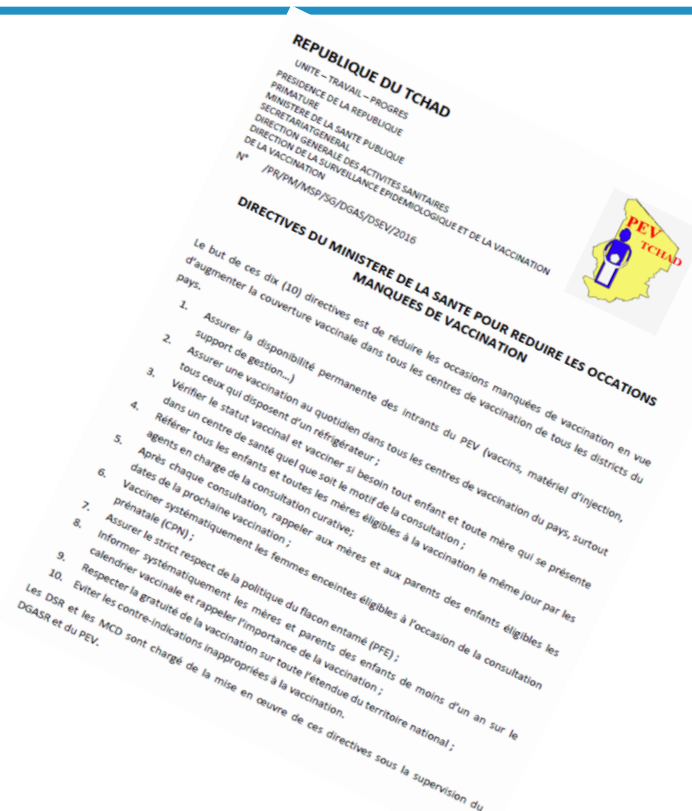
**What can we  
conclude?**

# Missed opportunities persist as a problem

- Prevalence remains high: 43% and 57%
- The country-led processes and resulting data generated enthusiasm and buy-in
- Each country developed a work plan of activities to reduce MOVs
- The full MOV strategy needs to be completed by supporting the implementation of intervention plans

# Chad 2015/2016 work plan to reduce MOVs

- Directive signed by the Minister, to all HW with 10 actions to reduce MOVs
- Training of HWs, including non-immunization staff
- Improved supervision and monitoring
- Social mobilization of communities and caregivers
  - to always bring vaccination cards to all health service encounters



- Training all HWs on immunization
  - Including development of an immunization screening module
- Improved supportive supervision
- Health talks for parents
  - Including the importance of always bringing health passport to the clinic
- Production of MOV job aids
- Letter to health workers on conducting **daily** vaccination sessions



**World Health Organization**



# Thank you